

Terre-Pex

ComfortPro Systems

Terre-Pex pre-insulated pipe solutions



Easy to install



Cost-Effective



Energy-saving

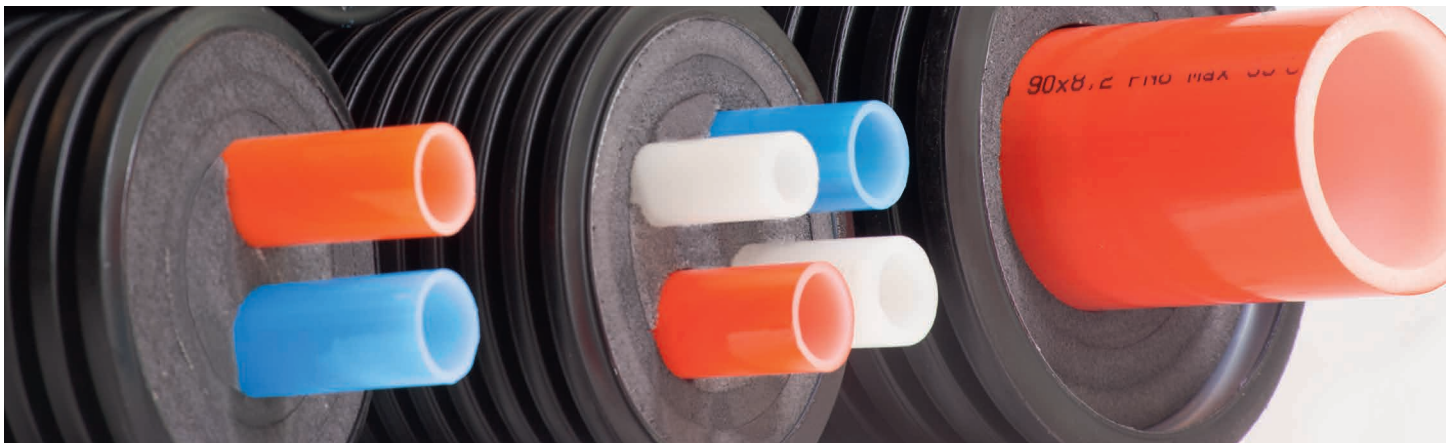
THE PERFECT SOLUTION FOR YOUR ENERGY DISTRIBUTION SYSTEM

Suitable for installation in the most difficult site conditions, the lightweight and maintenance-free Terre-Pex pipe is available in full coil lengths of 328 ft. or custom cut lengths from our inventory.

Benefiting from its unrivalled flexibility, our pre-insulated pipes significantly reduce the need for joints, practically eliminating the risk of leakage in the buried network, saving on both installation cost and time.

Terre-Pex insulates a full range of superior quality PEX-A core pipes from 28mm (1") up to 110mm (4") in a wide variety of double walled jacket pipes, ranging from 28mm (1") up to 63mm (2").

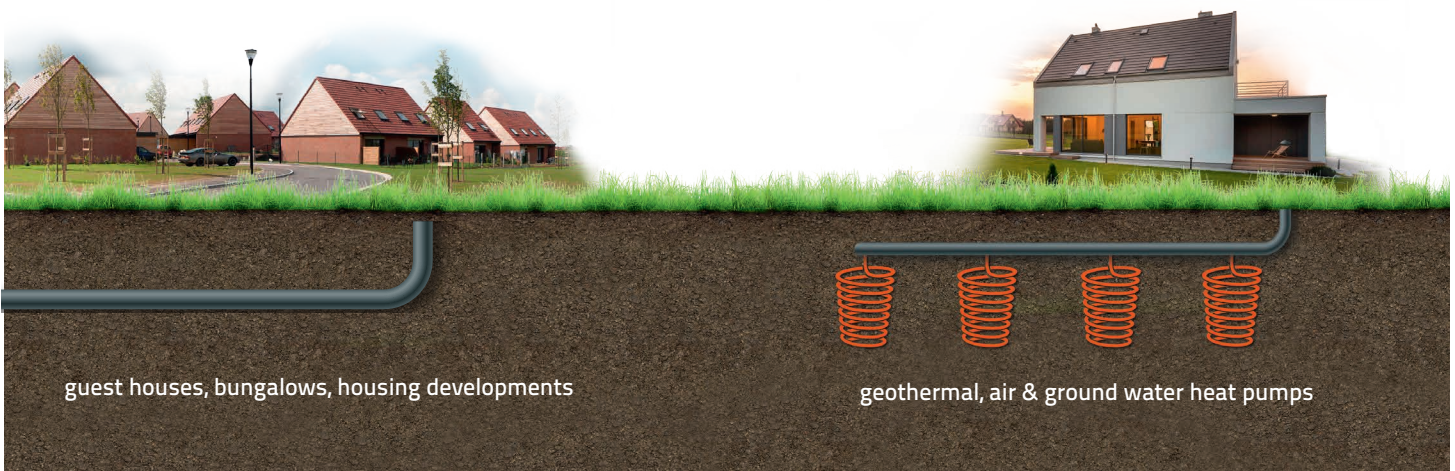
Completed with a comprehensive range of robust couplings and accessories, all of our products are readily available from stock and can be delivered directly on site.



For flexible, durable and sustainable underground piping networks in commercial and residential settings

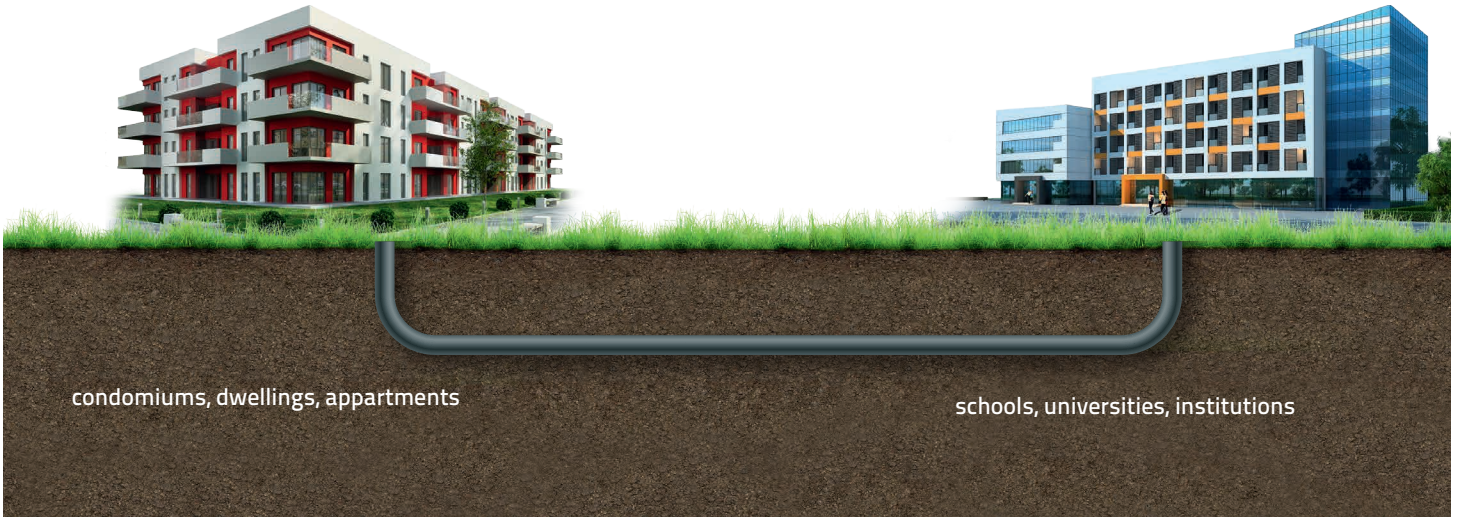
Serving a variety of hydronic heating, cooling, sanitary and potable water applications

2



guest houses, bungalows, housing developments

geothermal, air & ground water heat pumps



PRODUCT OVERVIEW

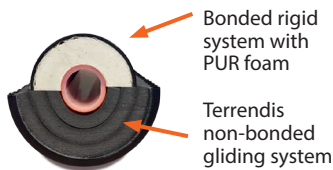
- Superior quality, crosslinked PEX-A core pipes
- Single, Double combinations available
 - Color coded flow and return identification
 - Excellent abrasion and chemical resistance
 - Low friction coefficient

- Multilayer, microcellular, crosslinked PEX foam insulation
- Excellent thermal insulation properties
 - Non-ageing, constant insulation performance
 - Permanent elastic shape-memory
 - Water repellent closed cell structure

- High grade, double walled, corrugated pipe jacket, combining maximal flexibility with outstanding mechanical protection

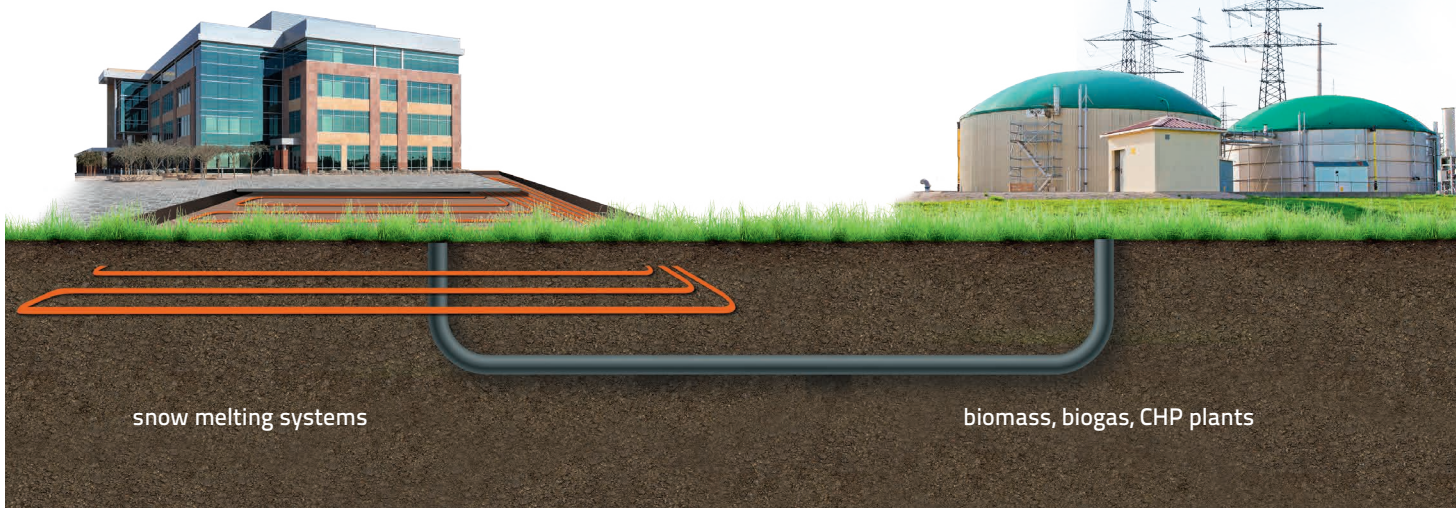


Easy to install



Terre-Pex Insulated Pex Tubing and Accessories have a 10 year factory limited warranty.





BEST FLEXIBILITY

There exist two main types of pre-insulated pipe systems: bonded polyurethane (PUR) hard foamed systems and non-bonded PE(-X) sheet foamed systems. In bonded systems, core pipe(s), insulation and outer jacket pipe are completely glued together by the PUR hard foam, resulting in a rigid piping system.

The insulation in non-bonded systems, such as Terre-Pex, consists of different layers of cross-linked microcellular PEX foam with closed cell structure, wrapped around the core pipe(s).

The different insulation layers in a non-bonded pipe system can slide independently from each other and from the core pipe(s). Also the smooth inner surface of the pipe jacket eliminates friction with the outer insulation layer. This results in a significantly improved flexibility of the pre-insulated pipe, making it much easier to install.

Mounting connectors on a non-bonded system is also very easy, where a bonded PUR system involves substantially more time and precision from the installer to properly strip the core pipe(s).

PRODUCT MATRIX

Unique combinations of core pipe dimensions with different insulation thicknesses.

PE-Xa carrier pipes from 28 up to 110 mm in double walled jacket pipes from 28 up to 63 mm.

ISO 9001 certified manufacturer of pre-insulated plastic pipe systems.

All pipe types and dimensions available in full 328 ft. lengths or custom cut lengths from our inventory.



Heating
(PEX-A)



Sanitary hot (potable) water
(PEX-A)



Cold (potable) water and cooling
(PEX-A)